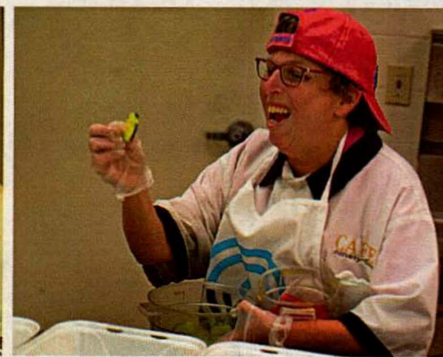
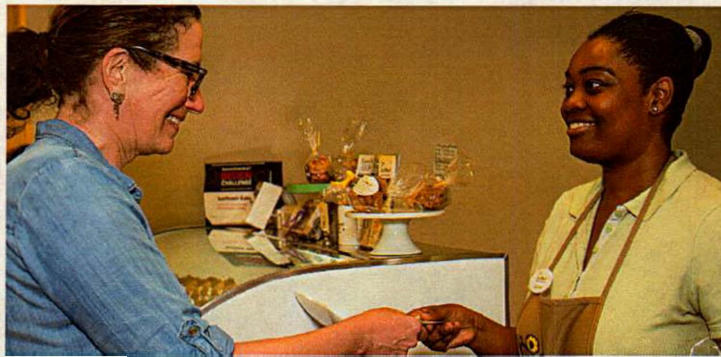
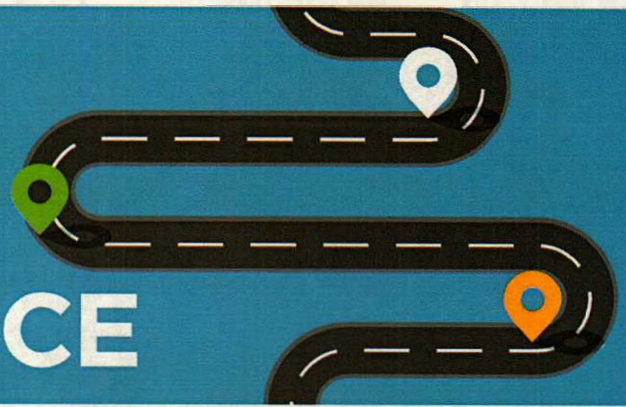


# ROAD TO INDEPENDENCE



JOBS | EDUCATION | HOUSING | SOCIAL | RECREATION | FINANCIAL | INDEPENDENCE

## Resource Fair for young people with disabilities & their families

The Jewish Federation of Greater Washington, in partnership with the Transition Work Group of Montgomery County, is proud to host a resource fair, offering a wealth of information about post-high school employment, social and recreational programs from over 35 local organizations.

Preregister for two specialized workshops led by industry experts. We encourage you to register early, as space is limited.

\*This event is free and open to adults, young adults and high school students ages 14 and up, who are transitioning into the workforce or higher education.

**REGISTER AT:**  
[shalomdc.org/inclusionresourcefair](http://shalomdc.org/inclusionresourcefair)

### WHEN:

**Sunday, March 31**

1:00 p.m.–3:30 p.m.

Exhibit tables open throughout event

### Workshops

(45 minutes)

*Creating Independence*

1:15 p.m. and 2:15 p.m.

*Making the Best of Your Social Life*

1:15 p.m. and 2:15 p.m.

### LOCATION:

**The Jewish Federation of Greater Washington**

Abraham S. & Minnie Kay

Conference Center

6101 Executive Blvd.

North Bethesda, MD

### COST:

Free

### PARKING:



The Jewish Federation  
OF GREATER WASHINGTON

Building an inclusive community is a Federation priority. If you or your family requires special assistance in order to attend this event, please contact us at 301-230-7200 so we can make every effort to accommodate your needs.